

catch sheet

(Tentative Name)

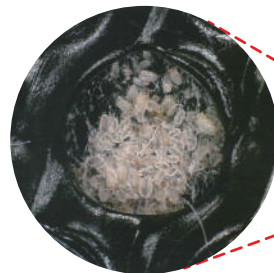
Care-Trap

for Dust Mite



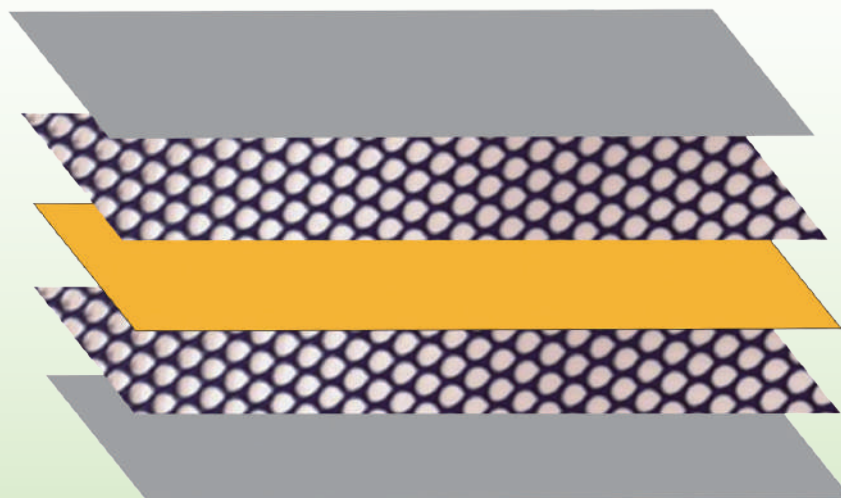
Product features

- Dust Mite is attracted and captured by the adhesive surface
- Dust Mite, its feces and its eggs are captured
- Non-use pesticide or repellent agent
- Thin and flexible shape to treat easy
- 100% of flammables



Construction (patent pending)

Five Layer Structure



- ← Thin nonwoven fabric which Dust Mite can pass through
- ← Attractant compounded PP mesh
- ← Adhesive sheet
- ← Attractant compounded PP mesh
- ← Thin nonwoven fabric which Dust Mite can pass through

□ Product information

[Care-Trap for Dust Mite]

Size : W13 x H19 cm

Material : Mesh / nonwoven fabric / polypropylene,

Country of origin : 148 g

Outer frame / paper, adhesive / acrylic

Attractant / fragrance (food additive)

□ Performance

① How many can be captured at home model?

Product	Rival product	Care-Trap for Dust Mite
The number of capture	1,824	16,524

② How many (maxim) can be captured?

Product	Rival product	Care-Trap for Dust Mite
The number of capture	7,103	392,832

③ Three month monitor at home

Setting place of Care-Trap for Dust Mite	The number of capture
Under the pillow (one point)	45
Under the Bed sheet (3points)	3967

□ How to install

- Taken out of the aluminum bag and indicate the starting date on paper frame.
- Set "Care-Trap for Dust Mite" in the place where ticks seems to live.
- After putting in three months, collected and thrown away.
- Recommendation place to set.

Under the bed sheet, futon in the closet, under the carpet, around the sofa, in the car and so on.

□ Precautions for use

- Please follow the usage instructions.
- The validity period and effect may vary depending on the usage environment.
- Do not use the product where it can be directly touched by skin or where pets or children touch.
- Use within 1 year after opening. Avoid direct sunlight and keep out of reach of children.
- Stop using if you have any abnormalities during use.
- Do not disassemble the main unit.
- For indoor mites only. It is not effective on outdoor mites.
- Do not place near fire or water.
- Do not use for anything other than its intended purpose.
- This product has a fascinating incense.

□ Sales 8thCAL Inc.

Kosan-Dai-Ichi BLDG.3F 2-16-7 Ginza,
Chuo-ku, Tokyo 104-0061, JAPAN

info@8thcal.design

